



HEALTH AND COMFORT
WORK HEALTH



健康舒适 工作养生
HEALTH AND COMFORT WORK HEALTH

rotation
360°



EAGLESEATING

Welcome —
— to Eagleseating 欢迎光临易高斯登

佛山市易高斯登家具有限公司
EAGLESEATING FURNITURE CO.,LTD

地址：广东省佛山市高明区富湾镇富湾工业区
Address: FuWan Industrial Area, FuWan Town, GaoMing District, Foshan city,
GuangDong, China

联系电话
国内：0757-88811111 / 0757-88819987 / 0757-88816808
Export: +0086-757-88811055 / +0086-757-88816699 / +0086-757-88811119
Fax: +0086-757-88816806
Email: juhan@juhan.cn
website: www.eagleseating.com



旗下品牌 Sub brand



R₁ 与太极完美结合
perfect combination with Taichi

行而下者为之器



1501B-2F24-Y

R1 融合现代实用美学与太极文化之精髓，集健康与养生为一体的产品特点。
R1 comprises the practical aesthetics, Taichi and healthy.



行而上者为之道



1501E-44



1501C-2F24-Y

遵循人体工学健康理念，从产品外观到结构及生产工艺，力求精益求精。

Follow the ergonomic health concept, from the design, structure and manufacturing process, strive for the excellence.

· 长期不正确的坐姿，会产生以下各种疾病。
· Long-term incorrect sitting posture could lead to the following diseases.

· R1 帮助矫正不良坐姿。
· R1 Help to correct your sitting posture.

一张好的人体工学椅至少应达到下列特点：
One ergonomic chair should be at least with the following features:



- (1) 符合动态作业需求
Meet the request for dynamic work
- (2) 符合前店的工作形态需求
Meet the request for any avant working forms.
- (3) 符合安全舒适需求
Safe and comfortable
- (4) 符合健康环保需求
Healthy and environmental-friendly



R₁ | 与太极完美结合 perfect combination with Taichi



1501B-2HF24-Y



1501C-2HF24-Y

COMBINATION OF ENVIRONMENTAL-FRIENDLINESS AND TECHNOLOGY

In response with modern office design concept, an office chair is not only designed for sitting, but also can enhance office image, bringing comfortable and harmonious feeling to the staff, hence increase work efficiency. The design concept and character of this series of office chair in accordance with the ergonomics is the best choice for the senior administration personnel.

配合现代办公设计概念，一张办公椅，已经不只是为坐而设，其同时可以提升办公室形象，带给工作人员舒适和谐感受，由此而增强工作效率。此系列办公椅之设计理念与特性，便是符合上术要求，为高级行政人员提供全面及最佳之选择。



1501E-44H



1501B-2HF24-Y

品质生活，奢华不奢侈。四大核心功能，让您工作和生活创造无限可能。
Quality life, luxury is not extravagant. Four key functions, help you enjoy the quality and luxury life.



头枕具备高度和角度调整
Wide headrest, multi-position
tilting adjustable.



活动式靠背结构，对不常坐姿势
以全方位的依托，充分缓解久坐
疲劳感。
Flexible backrest, provide a
full range of support for sitting
postures, fully help to cure
tiredness.



多轴联动调整扶手，在使用过程中提供无限可能。
Adjust the armrest through multi-axis
system, provide infinite possibilities during use.



底座结构调整功能丰富，内置碳纤维技术，是R1系列椅
的灵魂所在。
Multi-function for the mechanism, carbon fiber
technology for the component, this is the essence of R1
series.

R₁ | 与太极完美结合
perfect combination with Taichi



1501B-2HF24-Y

宽大头枕，给颈部更多舒适的承载空间
Wide headrest, fully support to your neck, more comfortable



头枕高度整
Height adjustment

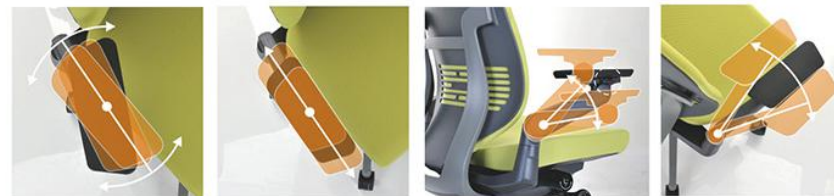
头枕角度调整
Angle adjustment

弹性头枕支撑
Forward and backward flexible



1501B-2WF24-Y

特有的多轴联动扶手臂，结合3D扶手面板，适应各种坐姿的手臂依托
Special multi-axis adjustable armrest and the 3D adjustable arm pad, support your arm from different sitting postures



扶手面板角度调整
Angle adjustment arm pad

扶手面板前后调整
Backward and forward slide
adjustment arm pad

扶手臂高低调整关节
Height adjustment arm

扶手臂水平面角度调整关节
Width adjustment arm

R₁ | 与太极完美结合 perfect combination with Taichi



※可选椅座
For option



软体椅背
Moulded foam with
fabric upholstery



透气椅背
Breathable mesh
upholstery



1501C-2WF24-Y

1501B-2WF24-Y

1501E-44W

1501C-2HF24-Y

背支撑机构和靠背为活动设计，流水般线条，紧贴人体背部曲线，顺应背部压力点的物理需求，靠背在倾仰时腰部向前托起，保持对腰部的呵护，无形中就能缓解疲劳。

Flexible design of back support structure and backrest, water-movement smooth line, close to human body curve, conform to physical needs of back pressure. The mechanism on backrest automatically adjust angle to support and protect your lumbar perfectly, reduce fatigue virtually.



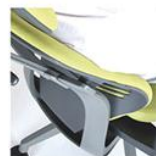
前倾工作状态
Front tilting



倾仰休闲状态
Back tilting



倾仰时腰部自然向前托起
Support your lumbar naturally
when back tilting



身体向左右两侧移动时，靠背也随之移动。
Backrest move accordingly when
body move left and right sides.

座提供透气式高弹力网和软体配置（本高密度定型海绵），可前后调整座位深度，将舒适体验一起延伸到座椅边沿，体会不一样的就坐体验。

Breathable high elastic mesh upholstery and high-density moulded foam with fabric upholstery for option, can adjust the seat depth by slider, give you special sitting experience.



进口高弹力网配置
Imported high elastic mesh
upholstery.



高回弹定型海绵配置
High-density moulded foam with
fabric upholstery.



可调整座深度
Depth adjustment by seat slider.

※可选椅座
For option

R₁ 与太极完美结合
perfect combination with Taichi

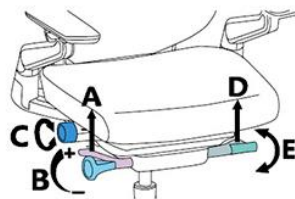


OUTSTANDING
SIMPLE
卓越的简约设计

DESIGN & WORK



1501B-2HF24-Y



- A 座高度调整 Pneumatic seat height adjustment
- B 椅背倾仰力度 Tension control a djustment
- C 座深度调整 Seat slider for seat depth adjustment
- D 椅背倾仰锁定控制 Back tilt lock adjustment
- E 前倾工作设置 Front tilting control

多功能一体式底盘，提供倾仰锁定和工作状态设置，让椅背在您工作时刻保持对身体的支撑。

Multi-functional mechanism, back tilt lock a djustment, keep supporting your body at any working time.

1501C-2HF24-Y

几个步骤就能轻松完成组装，即可享受R1给你带来的舒适方便。
Easy to assemble, you can complete the assembly independently.



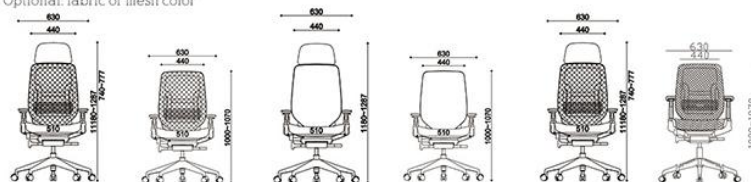
唯有凭借雄厚的实力在风起云涌的时代中乘风破浪，才能在竞争激烈的市场中夺得一席之地
Only by solid strength can a company compete with its competitors and win the market share among the competitive



美国BIFMA认证

专业证书

※ 可选面料
Optional: fabric or mesh color



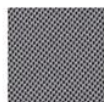
A-06



A-09



F-01



F-04



A01



A04



A-07



A-10



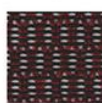
F-02



F-05



A02



A05



A-08



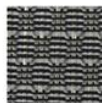
F-03



F-06



A03



A11

1501B/C-2F24-Y

1501B/C-2HF24-Y

1501B/C-2WF24-Y





HUMANIZED CURVE

According to the ergonomic design, the cushion comes with scientific curvature, perfectly matching user's sitting position. Thus the hip and leg muscles are naturally relaxed, allowing long time sitting without any tired feeling. Breathable mesh is used to replace the traditional leather and cloth for the cushion, strengthening air exchange, while reducing the heat accumulation of lower body. This inspiring feeling like the spring breeze, will make people refreshed, naturally improve work efficiency and stimulate the great inspiration.

依据人体工学设计的坐垫曲线，科学的弧度完美贴合使用者的坐姿，让臀部肌肉自然放松，达到久坐不累的效果。透气的网状坐垫取代了传统的真皮和布艺，加强空气交流，减少下身热量积聚，这种如沐春风的感觉，会让人神清气爽，自然提高工作效率，激发卓越灵感。



1601F-1

EXTRAORDINARY COMFORT

The design integrating the backrest and the cushion not only simplifies the visual aesthetic, but also guarantees that the product curvature for the most comfortable use is scientifically fixed, reaching a perfect balance between healthy using and aesthetic shape. Breathable mesh is used to replace the traditional fabric to speed up the exchange of air, creating the extraordinary comfort every minute.

靠背与坐垫一体化的设计，既简化了视觉审美，也将产品最舒适的使用弧度科学地定格，在使用健康与造型唯美之间取得完美平衡。透气网布取代传统布艺，加快空气交换，创造每分每秒的卓越舒适。



1601F-1



1601F-2



SIMPLIFY THE COMPLICATION, LIGHT AND CHIC

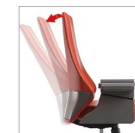
Graceful and streamlined shape overflows striking beauty, recurring the perfect combination of technology and aesthetics; superior comfort and multiple functionality, gives the user kind of leisurely feeling and thus double the passion for work.

优雅流畅的外形洋溢着令人怦然心动的美感，再现科技与美学的完美结合，卓越的舒适性多功能赋予拥有者一份悠然自得的感觉，倍添工作情趣。

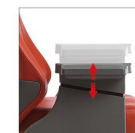
1503系列 Series | 工作 · 养生 | Healthy Working



013



背部倾仰，多角度锁定
Multi-position lockable tilt.



独家设计扶手，上下升降，PU 扶手面
Unique armrest design, height adjustment, PU arm pad.



多功能底座，背倾仰多角度锁定，带座滑板。
背倾仰力度调整
Multi-functional mechanism, multi-functional back tilt lock, with seat slider, back tilt tension adjustment.



后背盖与背板完美结合
Perfect seam in back cover.



背内板尼龙压铸成形，配置定型海绵
One mould injection PA nylon plate, upholstered moulded foam inside.

014



1503B-2P21-A



1503C-2P21-A



1503B-2P13-B



1503C-2P13-B

Liberate the burden in spine, to achieve the most high-end comfort: 1503 series. Unique waist support design in backrest, it is a one mould injection reinforced plastic board inside, upholstered with molded foam, finished by faux leather or fabric. the contoured seat, thick molded foam seat upholstered with faux leather or fabric, offering the wonderful feel when seating. Two kinds of armrests: one is one mould injection strong PU armrest, another is height adjustable heavy duty armrest. Two kinds of controls: simple control and multi-functional control. grey powder coated PA nylon base (compression affordable>1200KG). Good quality gas lift and caster. High back chair and mid back chair for options.

解放脊柱负担，实现高端、舒适、休闲的座椅：1503 系列。独特腰围包裹靠背设计，靠背内板是一模成型的加强结构，承受力 140KG，面料可配皮革或绒布，靠背和座均是高密度定型海绵。座 W 型凹型设计，厚实舒适，减轻久坐引起的不适。扶手两种规格可选：一种是 PU 固定扶手，一种是可升降扶手。两种底座：无级锁定底座和多功能底座。自主研发模具，PA 工程尼龙脚，灰色烤漆，承重 1200KG，气压棒和脚轮符合 BIFMA 质量标准。1503 有大班椅和中班椅配置。

1504系列 Series | 工作 · 养生 | Healthy Working



背部倾仰，多角度锁定
Multi-position lockable tilt.



上下升降扶手，PU 扶手面
Height adjustment armrest, PU arm pad.



带座滑板，座垫前后移动，调整座深度
With seat slider.



后背盖与背板完美结合
Perfect seam in back cover.



背内板尼龙压注成形，配置定型海绵
One mould injection PA nylon plate, upholstered moulded foam inside.





1504B-2P15-A



1504C-2P15-A



1504B-2P15-B



1504C-2P15-B

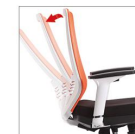
Modern European style office chair: 1504 series. Backrest is made of faux leather or durable mesh, a reinforced PA plastic board upholstered molded foam inside (safe and environmental friendly). The shape of back kindly support spine. The seat is made of quality molded foam upholstered faux leather or fabric. Two kinds armrests: fixed armrest and height adjustment armrest. The mechanism pass BIFMA test, is of high quality, optional seat slider. High profile PA nylon base (affordable compression >1200KG). Quality gas lift and caster. High back chair, mid back chair for options.

现代风格座椅: 1504 系列。靠背内板是一模成型的加强结构, 承受力 140KG, 靠背造型自由支撑脊柱。靠背和座均是高密度定型海绵, 面料羔羊西皮或小菱格透气网布。两种扶手选择: 固定扶手和上下升降扶手, 白色或灰色喷漆。自主研发模具, PA 工程尼龙脚, 承重 1200KG。气压棒和脚轮符合 BIFMA 质量标准。1504 款有大班椅, 中班椅配置。

1502F 系列 Series | 工作 · 养生 | Healthy Working



023



无级锁定，靠背多角度倾斜
Multi-position lockable tilt.



扶手上下升降，PU 扶手面
Height adjustment armrest, PU arm pad.



模拟人体腰部曲线设计
Unique back design to support lumbar.

024



1502F-2P20-A



1502F-2P22-B

Improve the efficiency in office work, high-quality staff chair: 1502F series. Unique back shape to support spine, strong PA nylon back frame, upholstered with breathable, durable mesh. Up&down armrest, PU arm pad(compression affordable>140KGS). Seat is made of quality molded foam and breathable fabric. Functional control, strong PA nylon base(compression>1200KGS), quality gas lift and caster.

提高工作效率的高品质职员椅：1502F 系列。独特护腰靠背形状，PA 工程尼龙背框，配透气大菱格网布。上下升降扶手，PU 扶手面（扶手垂直承重 140KG）。座为高密度定型海绵，配透气小菱格网布。简易操作底座，自主研发模具，PA 工程尼龙脚，承重 1200KG，气压棒和脚轮符合 BIFMA 质量标准。

1505E-38 系列 Series | 工作 · 养生 | Healthy Working



堆叠，节省存放空间
Stackable, save space.



1505E-38A



1505E-38B

Modern, dynamic visitor chair: 1505E-38 series. The back is made of strong plastic(optional white or black), the seat is made of quality foam upholstered with breathable mesh(optional different colors). Powder coated A3 steel bracket (optional Grey or silver). One mould injection strong PA armrest.

现代动感的会议椅：1505E-38 系列。椅背为 PA 工程尼龙料（黑白可选），座为优质海绵配透气小菱格网布（颜色可选）。A3 钢喷涂脚架（潮潮灰，闪亮眼）。一模成型 PA 工程尼龙料扶手。





1301B-1



1301C-1



1301E-36



1301E-36W-1



1301B-1W



1301C-1W



1301E-36W



1301E-36W-1

Reducing the fatigue which is caused by prolonged seating- 1301 series. The backrest of 1301 series is made of excellent PA nylon, upholstered durable elastic mesh (optional extra faux leather cover), the backrest can be adjusted up & down, forward & backward, make the posture fit to every body sizes. Three kinds of seats: thick molded foam upholstered with durable fabric(1301), thick molded upholstered with excellent faux leather(1301H), imported high elastic mesh(1301W). Getting more comfort on seating. Height&Angle adjustable armrest, PU arm pad. Two kinds control: Simple tilt lock control or Multi-functional control. reinforced PA nylon base. Silver A3 steel bracket in meeting chair. Quality gas lift and caster. High back chair, mid back chair, conference chair for options.

减少久坐带来的身体疲劳——1301 系列。1301 系列椅框为 PA 工程尼龙配上耐用弹力网布。靠背可以上下升降调整背部支撑位置，可以前后调整，适合任何身高体型的办公人士。座为厚实的定型海绵们上柔软的绒布，座感更舒适。3D 扶手可上下升降，PU 扶手面可前后和角度调整。底盘是二段式锁定机能。自主研发模具，PA 工程尼龙脚。A3 钢会议椅架子。气压棒和脚轮符合 BIFMA 质量标准。1301 系列有大班椅，中班椅，会议椅。



头枕上下升降、翻转
Height&Angle adjustable headrest.



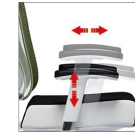
靠背上下升降，白色喷漆
Height adjustable backrest.



靠背前后活动
Forward&backward backrest.



座背同步倾仰
Lockable tilt.



3D 扶手上下升降，PU 扶手
面左右前后活动
3D height adjustable
armrest,adjustable PU arm pad.



座垫加厚定型海绵
Thick molded foam seat.



会议架带连接扣
Connector in conference chair.



会议架带移动滑轮
With wheels in conference chair.



1301B-1H



1301C-1H



1301E-36H



1301E-36H-1

Reducing the fatigue which is caused by prolonged seating- 1301 series. The backrest of 1301 series is made of excellent PA nylon, upholstered durable elastic mesh (optional extra faux leather cover), the backrest can be adjusted up & down, forward & backward, make the posture fit to every body sizes. Three kinds of seats: thick molded foam upholstered with durable fabric(1301), thick molded upholstered with excellent faux leather(1301H), imported high elastic mesh(1301W). Getting more comfort on seating. Height&Angle adjustable armrest, PU arm pad. Two kinds control: Simple tilt lock control or Multi-functional control. reinforced PA nylon base. Silver A3 steel bracket in meeting chair. Quality gas lift and caster. High back chair, Mid back chair, meeting chair for options.

减少久坐带来的身体疲劳——1301 系列。1301 系列背框为 PA 工程尼龙配上耐用弹力网布。靠背可以上下升降调整背部支撑位置，可以前后调整，适合任何身高体型的办公人士。座为厚实的定型海绵们上柔软的绒布，座感更舒适。3D 扶手可上下升降，PU 扶手面可前后和角度调整。底盘是二段式锁定机能。自主研发模具，铸铝合金五星脚。A3 钢会议椅架子。气压棒和脚轮符合 BIFMA 质量标准。1301 系列靠背可加皮革，座可用皮革，更显高档大方。1301 系列有大班椅，中班椅，会议椅。



扶手独家设计，上下升降，PU 扶手面
Unique armrest design, up&down, PU arm pad.



锁仰锁定功能底座机构
Lockable tilt mechanism.



1201B-1



1201B-1H



1202B-1H



1202B-1H

Reclining office chair-1201, 1202.backrest are made of quality engineering plastic, or upholstered breathable mesh, optional faux leather cover. with Height adjustment headrest, there are five points angle adjustment in backrest, functional control with seat slider. Functional armrest. The seat can be unfolded , then it is a lounge chair. King size reinforced base . when you are working, it is a good office chair, when you want to relax, it is a perfect lounge chair.

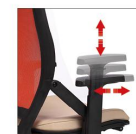
可以变身躺椅的办公椅——1201、1202 系列。背框为PA工程尼龙料，可配透气网布、西皮，可加软体皮套。带高度调整头枕，背独立倾斜、角度五段式锁定。座前后滑动，扶手上下升降，PU 扶手面可前后移动。座垫可翻开变为脚踏，办公的时候是一把舒适的椅子，休息的时候，能变身为一张很好的休息沙发。配加大钢制五星脚。



头枕上下升降，翻转
Height&Angle adjustable headrest.



靠背分段向后倾斜
Back tilt angle adjustment.



扶手上下升降，PU 扶手面，
可前后活动
Height adjustable armrest,
PU arm pad, forward&backward.



座垫定型海绵，可前后滑动，
座板能打开
Molded foam seat, with seat slider.
Seat board can be opened.



背框及背板设计，
可选择透气网面或带海绵
Unique backrest design, optional
durable mesh upholstered or faux
leather upholstered.



0901B-2W



0901C-2W



0901E-28W



0901B-2



0901C-2



0901E-28



0901B-2H



0901C-2H



0901E-28H

Heavy duty aluminum frame and light feeling mesh combined, high grade space: 0901 series. Curve design on backrest, up and down adjustment to support spine, suitable for different size bodies in office. Strong PA nylon back frame and seat frame. Height&Angle adjustable armrest. Functional mechanism, wire control, Optional seat slider. High profile polished aluminum base(affordable compression>1300KGS), A3 steel cantilever in conference chair. Quality caster and gas lift(Pass BIFMA test). Optional high back chair, mid back chair and conference chair. Optional faux leather or high elastic mesh in back. Optional high elastic mesh or breathable mesh or faux leather in seat.

厚重的铝制结构和轻薄质感的网布结合, 演绎高品质空间: 0901系列。弧形的靠背设计, 可上下调整靠背支撑位置, 符合各种体型的办公需求。PA工程尼龙背框和座框, 靠背和座可配皮和高弹力网布。3D扶手可上下左右前后调整。多功能底盘, 线控操作, 可调整座深度。自主研发模具, 铸铝合金五星脚, A3钢会议椅架子, 气压棒和脚轮符合BIFMA质量标准。有大班椅, 中班椅和会议椅配置。



头枕上下升降, 翻转
Height&Angle adjustment.



靠背上下升降
Height adjustable backrest.



靠背多段倾仰锁定, 背倾仰
松紧调节
Multi-position lockable tilt, back
tension adjustment.



3D扶手上下升降, 宽度调整,
扶手面前后左右活动
3D armrest ,height adjustment,width
adjustment,forward&backward.



座垫前后移动, 调整深度
With seat slider.





06001B-2P5



06001C-2P5



06001E-19



头枕上下升降、翻转
Height&Angle adjustment.



靠背多段锁仰锁定
Multi-position lockable tilt.



3D 扶手上下升降，
扶手面左右活动
Height adjustable 3D armrest
arm pad adjustment horizontally.



06001B-2P6



06001C-2P6



06001C-2HP19



06001C-2P19-C



06001C-2P19-T



06001E-19-C



腰靠上下调整
Height adjustment in lumbar bag.

Regular wide and thick office chair: 06001 series. The appearance of 06001 series is regular. Square strong PA back upholstered with imported high elastic mesh, optional adjustable lumbar bag. Square seat is made of high density foam with breathable sandwich fabric. Strong aluminum back bar connecting, offer safe and comfortable seating. Functional armrest. Multi-functional mechanism, five points tilt lock. Polish aluminum base(affordable compression>1200KGS),A3 steel cantilever in conference chair. Have high back chair, mid back chair ,conference chair for options.

端正宽厚的办公用椅：06001 系列。06001 系列没有花巧的外表，给你方正、硬朗的办公气息。PA 工程尼龙背框配进口高弹力网布，可调节腰靠。方正的座垫为高密度海绵。结实的铸铝合金连接座背，提供安全舒适的座感。上下升降，扶手面前后活动和角度调整的 3D 扶手。多段锁定多功能底座。自主研发模具，铸铝合金五星脚（可选 PA 工程尼龙脚）。A3 钢会议椅架子，气压棒和脚轮符合 BIFMA 质量标准。有大班椅，中班椅和会议椅配置。





06002B-2WP5B



06002B-2WP5C



06002C-2WP5



06002E-20W



06002B-2P5B



06002B-2P5C



06002C-2P5



06002E-19



06002B-2HP5B



06002B-2HP5C



06002C-2HP5



06002E-19H

Excellent Contoured design: 06002 series. Contoured shape in back and seat, it let you feel more free in any workspace. PA back frame (upholstered imported high elastic mesh or quality faux leather), PA seat frame (upholstered imported high elastic mesh or molded foam with quality faux leather). Height adjustable headrest, adjustable lumbar bag. Multi-functional armrest, multi-functional control. High profile aluminum base (optional PA nylon base). silver A3 steel cantilever on conference chair. Good quality caster and gas lift. High back chair, mid back chair, conference chair for options.

极具线条感的设计之美: 06002 系列。靠背和座垫采用瀑状线条, 配上圆润的扶手和五星脚设计, 在任何工作空间都能得到更好的舒适感受。PA 工程尼龙背框和座框, 靠背和座可配皮和高弹力网布。带升降头枕, 可调节腰靠。3D 扶手, 可上下升降, 左右调节。多功能底座可带座滑板, 调整座深度。自主研发模具, 铸铝合金五星脚 (可选 PA 工程尼龙脚)。A3 钢会议椅架子。气压棒和脚轮符合 BIFMA 质量标准。有大班椅, 中班椅和会议椅配置。



头枕上下升降, 翻转
Height & Angle adjustment.



靠背多段倾仰锁定
Multi-position lockable tilt.



腰靠前后调整
Adjustable lumbar bag.



3D 扶手上下升降, 扶手面前后移动
Height adjustable 3D armrest and forward&backward arm pad.



座深度调整
With seat slider.





0634 | 系列 Series



0634B-2P5B



0634B-2P5C



0634C-2P5



0634E-16



0634B-2WP5B



0634B-2WP5C



0634C-2WP5



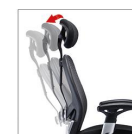
0634E-18W

Classic ,Steady office chair: 0634 series. PA nylon back upholstered high elastic imported mesh, seat are made of molded foam upholstered with breathable sandwich fabric or imported high elastic mesh(0634B-2WP5B(C), 0634C-2WP5, 0634E-18W). Extreme strong aluminum back bar connect back and seat. Constructing safe and comfortable seat. Functional five positions back tilt lock mechanism, back tilt tension adjustment, with seat slider, 0634B-2WP5B(C),0634C-2WP5 Reinforced aluminum base(affordable compression>1200KG), A3 steel cantilever in conference chair. Quality caster and Gas lift(Pass BIMFA test). High back chair, mid back chair, conference chair for options .

经典稳重的办公椅：0634 系列。背网布为进口高弹力网布，座为高密度定型绵配透气三文治网布（可配高弹力进口网布）。PA 工程尼龙科外框和座外框，高强度铸铝合金连接，构建舒适安全座感。多功能多段锁定底座，背倾仰力度调节，可带座滑板，调整座深度。自主研发模具，铸铝合金五星脚，A3 钢会议椅架子。气压棒和脚轮符合 BIFMA 质量标准。有大班椅，中班椅和会议椅配置。



头枕上下升降、翻转
Height&Angle adjustable
headrest.



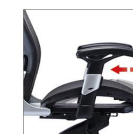
背靠多段倾仰锁定，
背倾仰力度调节
Multi-position lockable tilt, back
tension adjustment.



腰靠前后调整
Forward&backward lumbar bag.



扶手上下升降，宽度调整
Height adjustable armrest, Width
adjustment.



座前后移动，调整座深度
With seat slider.

06004 | 系列 Series



06004B-2P5C



06004C-2P5



06004E-19



06004C-2WP5



06004E-20W



06004C-2HP5



06004E-19H



06004C-2P13



06004E-19-B

Comfort, Dynamic computer chair: 06004 series. Great and strong back shape with adjustable lumbar bag, the backrest is made of high elastic mesh or quality faux leather, concave seat upholstered high elastic mesh or molded foam with faux leather. Multi-functional mechanism, five points tilt lock, back tilt tension adjustment. Reinforced PA nylon base (Affordable compress>1200KGS), A3 steel cantilever in conference chair. High back chair, mid back chair, conference chair for options.

动感舒适的办公椅：06004 系列。优良的背部支撑带可调节腰靠，背网布为进口高弹力网布，座为高密度定型绵配透气三文治网布（可配皮革）。PA 工程尼龙料外框和座外框，悬臂固定扶手。多功能多段锁定底盘，背倾仰力度调整，可带座滑板，调整座深度。自主研发模具，PA 工程尼龙脚（通过 1200KGS 静压测试），A3 钢会议椅架。气压棒和脚轮符合 BIFMA 质量标准。有大班椅，中班椅和会议椅配置。

工作·养生 | Healthy Working





1302F-1



1302F-1



1302E-34



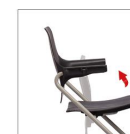
1302E-34

Massage the back: 1302 series. Back is curved design, Comfortably support the lumbar. Back and seat are made of engineering plastic. Moveable backrest, reinforced PA base. A3 steel cantilever in meeting chair. Staff chair and meeting chair for options.

紧贴靠背的职员椅：1302 系列。背为特别弧度设计，可舒适地包裹靠背。座和背为 PA 工程尼龙料制作，背可前后移动。自主研发模具，PA 尼龙五星脚，A3 钢脚架（会议椅）。1302 系列配有职员椅和会议椅配置。



靠背前后活动
Forward&backward backrest



座垫掀起堆叠
Seat can be folded, stacking horizontally



1001C-2

1001F-2

1001F-2

1001F-2

Comfortable modern typist chair: 1001 series. One mould injected PA seat and back connection., the backrest, connection, Armrest are made of PA nylon. Back is upholstered with elastic mesh, seat is upholstered with molded foam and durable fabric. Wire handle control: up and down, synchronous tilt mechanism. Up&Down armrest, can tilting backward. PA66 reinforced nylon base. Quality caster and Gas lift.

现代舒适灵动的职员椅：1001 系列。一体式坐位与背框连接，独特设计，PA 工程尼龙料一模压注成型。线控升降和倾仰底盘。自主研发模具，可升降和后仰的扶手，PA 工程尼龙脚。气压棒和脚轮符合 BIFMA 质量标准。



靠背倾仰
Tiltable backrest.



扶手向后翻转
Tilt adjustment armrest.



扶手上下升降。面板前后活动
Height adjustable armrest,
forward&backward arm pad.



0902F | 系列 Series



0902F-2P13



0902FE-29

Extreme strength and practical task chair: 0902F series. Good quality PA nylon back and heavy duty aluminum corner, back upholstered elastic mesh, seat is made of molded foam upholstered with breathable fabric. Infinite tilt lock, multi-functional control. Up&Down armrest(affordable compression>90KGS), Reinforced PA nylon base (Affordable compression >1200 KGS), Silver A3 steel cantilever in meeting chair. Quality caster and gas lift. Task chair and meeting chair for options.

极度牢固和实用的职员椅 0902F 系列。PA 工程尼龙背框和铝合金角码，靠背高弹力网布与座包高密度海绵的结合，拥有舒适的座感。可任意倾斜锁定的无级底座。扶手承重 140KG。自主研发模具，PA 工程尼龙脚（通过 1200KG 静压测试）。A3 钢会议椅架子。气压棒和脚轮符合 BIFMA 质量标准。0902 系列配有职员椅和会议椅。



0801F-2P13M



0801F-2P13



0801E-25



0801H-26



0801H-26S



0801H-27



0801H-27S

Inspiring your enthusiasm: 0801 series. Perfect curve back, "Y" shape back support, quality Engineering Plastics back frame. Upholstered soft knit mesh. Seat is made of molded foam with elastic fabric mesh. Height adjustment armrest (ok for compression 90KGS), PU arm pad. Multi-Functional mechanism for task chair: infinite tilt lock, back tilt tension adjustment, exclusive polish aluminum base (OK for 1200KGS compression). A3 silver steel bracket in conference chair and meeting chair. 0801 series is of high quality, and price is competitive. Task chair, meeting chair, conference chair for options.

激发工作热情的办公椅：0801 系列。完美的靠背曲线，PP 工程塑料背框，Y 型后背加固支持，配上柔软的网布织物。座为高密度定型海绵网透气网布。扶手可升降（垂直承重 90Kgs），配 PU 扶手面。功能底座可无极躺仰锁定，靠背躺仰松紧调节。自主研发模具，铸铝合金五星脚（静压 1200KG）。A3 钢会议椅架子。气压棒和脚轮符合 BIFMA 质量标准。0801 系列拥有优秀的品质、舒适的座感，而性价比非常高。0801 系列有职员椅，会议椅，培训椅。





07001F-1P8



07001FE-23



07001FE-17



07001FE-21

Competitive "little Fang": 07001F series. The backrest of 07001F is made of quality engineering plastic upholstered with durable mesh. Seat is made of high density foam and breathable mesh. Height adjustable armrest, simple lock control. the reinforced PA nylon base is made by ES own mould. A3 steel bracket in meeting chairs. Casters and gas lift are of high quality (pass BIFMA test). Task chair, meeting chair, conference chair for options.

实惠的“小方”：07001F 系列。07001F 系列靠背是由 PA 工程尼龙料成型，配上透气网布。座为高密度海绵上耐用网布。可升降扶手，一段锁定底座。自主研发模具，PA 工程尼龙脚。A3 钢会议椅架子。气压棒和脚轮符合 BIFMA 质量标准。07001F 系列有职员椅，会议椅，班前椅。





06001F-2P6



06001FE-24



06001FE-15



06001FE-22

Smart ,practical task chair: 06001F series. The concave design on seat make you feel comfortable, quality foam upholstered breathable mesh . Round back is made of PA nylon upholstered with mesh. Height adjustable armrest, simple control. Strong PA nylon base .A3 steel bracket in meeting chairs. Task chair, conference chair, meeting chair for options.

灵巧实用的职员椅“小圆”：06001F 系列。06001F 系列座面采用高密度海绵配透气网布，获得舒适的座感。小巧圆顺的靠背由 PA 工程尼龙料配上透气网布，带可调整腰靠。扶手可以升降，同步倾仰底座。自主研发模具，PA 工程尼龙五星脚。A3 钢会议椅架子。06001F 系列有职员椅，会议椅，班前椅。



1203E 系列 Series



1203E-33



1203E-33S



1203E-33-1



1203E-33



1203E-33S



1203E-33-1



1203E-33S-1

From meeting room to studio, it is suitable: 1203E series. strong PA nylon backrest upholstered with elastic mesh, nice lumbar support design. Quality molded foam upholstered durable fabric mesh. Heavy duty chair steel frame (silver or black powder coat), one mould injected PU armrest. Optional tablet, casters in 1203E series.

从一般会议到研讨室都适用的椅子：1203E 系列。PA 工程尼龙背框配高弹力网布，恰到好处的腰部支撑设计。座是优质定型棉网透气网布。厚重的四脚支架，扶手具有中国古典家具线条灵感，PU 材质。1203E 系列配有写字板，脚轮可以供选择。



1002E | 系列 Series



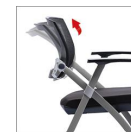
1002E-31



1002E-31F



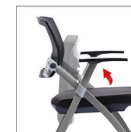
1002E-31S



背靠活动
Flexible backrest.



扶手前后活动
Forward&backward arm pad.



座垫折起, 堆叠
Seat can be folded, stacking horizontally.



1002E-31-1



1002E-31S-1



1002E-31FS-1

Simplicity, modern ergonomic meeting chair: 1002E series. Excellent PA nylon frame, durable elastic mesh upholstered. Molded foam upholstered breathable mesh in seat. The chair bracket is made of A3 steel, forward and backward armrest. The seat can be folded, stacking horizontally. Save stocking space. Two kinds of backrests: fix and flexible, optional caster and tablet. The seat pass BIFMA 136kgs drop test.

简约现代人体工学会议椅：1002E 系列。PA 工程尼龙背框，结实耐用的高弹力网布。座配定型海绵和小梨纹布。整椅支架为结实 A3 钢制造，扶手可前后滑动，座翻起后可横向堆叠，节省堆放空间。靠背有两种方式：固定和可摇动，脚轮和写字板可供选择。通过 BIFMA 136KG 跌落测试。



1003E-32

1003E-32

1003E-32

Simplicity, leisure meeting chair: 1003E. Backrest and seat are made of strong PA nylon. Reinforced structure in seat. chair bracket is made of Excellent A3 steel. Stackable function, save stock space. It can be used in meeting room, or rest area. Optional three colors: black, red, white.

简约休闲会议椅：1003E。靠背和座为 PA 工程尼龙料，具有树枝取向的镂空设计，A3 钢架与扶手一体，自然扭曲而成，淡雅灰喷涂。椅子可堆放叠起，节省摆放空间。既适用于会议室，也是用于休息区域。颜色有黑，白，红三种可选。





06002F-3



06002F-3



06002F-3



06002F-3

Dual use conference chair: 06002F-3. The 06002F-3 is made of strong PA nylon, chair bracket is A3 steel with chrome finished. One key control : office chair become office table. Fantastic Dual use.

“一箭双雕”的会议椅：06002F-3。06002F-3 椅身由 PP 工程料压注，椅架为电镀 A3 钢。06002F-3 可以一键翻起变成休闲桌，一物两用。



E-9



E-9-1



E-9H



E-9H-1



E-9S



E-9S-1



E-10

wonderful Simplicity design: E9,E10. shine silver powder coat chair frame, upholstered with breathable mesh or soft faux leather, or shine engineering plastic. Armrest is made of strong plastic. Quality foam upholstered mesh, or faux leather, or strong plastic in seat. Optional tablet in E9 series.

简洁设计之美 E9,E10 系列。金属椅架，能配上通透的网布靠背，或柔软舒适的西皮，或明亮的工程塑料。扶手为结实塑料扶手。座垫能配海绵和透气网布，或西皮和塑料。E9 系列可配置写字板。



17B-1



17C-1



17D-1



17E-5



17B-1H



17C-1H



17D-1H



17E-5H

Classic Eames style: 17 series. Back : high tech chrome plated steel frame, a combination of imported elastic mesh or faux leather stitched horizontally to achieve a series of ribs running the width of the chair. Fitted in to the angled frame which is constructed so as to encourage good posture and give firm lumbar support. simple control. polish aluminum armrest. Aluminum base. A3 chrome steel bracket in meeting chair&conference chair. high back chair, mid back chair, conference chair, meeting chair for options.

经典 Eames 风格：17 系列。电镀框架，背和座为弹性网布或皮质，背和座的弯位恰到好处，构建一个好的坐姿，能给出更好的背部支撑。扶手有铝合金和尼龙两种版本。底座有两种：经典底座和多功能底座。五星脚有铝合金和 PA 尼龙脚选择。A3 钢会议椅架。17 系列有大班椅，中班椅，会议椅，班前椅配置。



0517 P4 | 系列 Series



0517B-1TP4



0517C-1TP4



0517D-1T



0517E-5T



0517B-1PP4



0517C-1PP4



0517D-1P



0517E-5P

Classic Eames style: 0517 P4 series. Back : high tech chrome plated steel frame, a combination of faux leathers or elastic mesh stitched horizontally to achieve a series of ribs running the width of the chair. Fitted in to the angled frame which is constructed so as to encourage good posture and give firm lumbar support, simple control, plastic armrest. PA nylon base . A3 chrome steel bracket in meeting chair&conference chair. High back chair, mid back chair, conference chair, meeting chair for options.

经典 Eames 风格: 0517 P4 系列。电镀框架, 背和座为整块皮革或弹力网布压制, 背和座的弯位恰到好处, 构建一个好的坐姿, 能给予更好的背部支撑。PA 工程尼龙扶手。简易底盘。PA 工程尼龙脚。A3 钢电镀会议椅架。0517 P4 系列有大班椅, 中班椅, 会议椅, 班前椅配置。



0517 P5 | 系列 Series



0517B-1P5



0517C-1P5



0517D-1



0517E-5



0517B-1HP5



0517C-1HP5



0517D-1H



0517E-5H

Classic Eames style: 0517 P5 series. Back : high tech chrome plated steel frame, a combination of faux leather or imported elastic mesh stitched horizontally to achieve a series of ribs running the width of the chair. Fitted in to the angled frame which is constructed so as to encourage good posture and give firm lumbar support. Multi-functional control: Multi back position tilt lock. Polish aluminum armrest. polish aluminum base .A3 chrome steel bracket in meeting chair&Conference chair. High back chair, mid back chair, conference chair, meeting chair for options.

经典 Eames 风格：0517 P5 系列。电镀框架，背和座为整块皮革或者进口高弹力网拉伸，背和座的弯位恰到好处，构建一个好的坐姿，能给到更好的背部支撑。铝合金抛光扶手。多功能底座：多段倾仰锁定，背倾仰力度调节。铝合金抛光五星脚。A3 钢电镀会议椅架。0517 P5 系列有大班椅，中班椅，会议椅，班前椅配置。



25B-1P5



25C-1P5



25E-5

Allow better integration of metal and leather: 25 series. Back: high tech chrome plated steel frame, a combination of real or faux leathers stitched horizontally to achieve a series of ribs running the width of the chair. Fitted in to the angled frame which is constructed so as to encourage good posture and give firm lumbar support. Aluminum polish armrest, multi-functional mechanism, polish aluminum base. A3 chrome steel cantilever in conference chair. High back chair, mid back chair, conference chair for options.

让金属与皮革更好地融合: 25 系列。电镀框架, 背和座是由一整张皮革及海绵缝合而成, 背和座的角度恰到好处, 构建一个舒服的坐姿, 能给予更好的背部支撑。扶手为铝合金抛光扶手, 多功能底座, 铝合金抛光脚, A3 钢会议椅架子。25 系列有大班椅, 中班椅, 会议椅配置。



26B-1P5

26C-1P5

26D-1

26E-5



26B-1HP5

26C-1HP5

26D-1H

26E-5H

Classic high grade metal chair : 26 series. High tech chrome A3 steel back&seat frame, upholstered with durable mesh or faux leather(optional with soft cushion on back and seat). Aluminum armrest, multi-functional mechanism , Aluminum base. A3 chrome steel bracket in meeting chair & conference chair. High back chair, Mid back chair, meeting chair, conference chair for options.

经典高档金属椅：26 系列。电镀 A3 钢椅背和座框架，可配耐用网布或皮革（座和背可添加软体）。铝合金抛光扶手，多功能底座，铝合金抛光脚。A3 钢电镀会议架。26 系列有大班椅，中班椅，会议椅，班前椅。





31B-1



31C-1



31D-1



31E-5

The wonderful blend of Metal, mesh, leather: 31 series. High tech chrome metal frame, aluminum polish armrest, base. The backrest is made of faux leather and mesh, waterfall seat is made by quality molded foam upholstered with faux leather. Multi-functional control, five points tilt lock. A3 chrome steel bracket in meeting chair & conference chair. High back chair, mid back chair, conference chair, meeting chair for options.

金属, 网布, 皮革的绝妙结合: 31 系列。电镀金属框架, 铝合金抛光扶手, 五星脚。靠背由皮革和网布缝制, 座高密度海绵配上皮革。多功能多段仰锁定。A3 钢会议椅架。31 系列有大班椅, 中班椅, 会议椅, 班前椅配置。



| 工作 · 养生 | Healthy Working |